



CE Workgroup

Status of Embedded Linux November 2018

Frank Rowand

Sr. Staff Software Engineer, Sony Electronics

Linux Kernel Maintainer – Device Tree sub-system

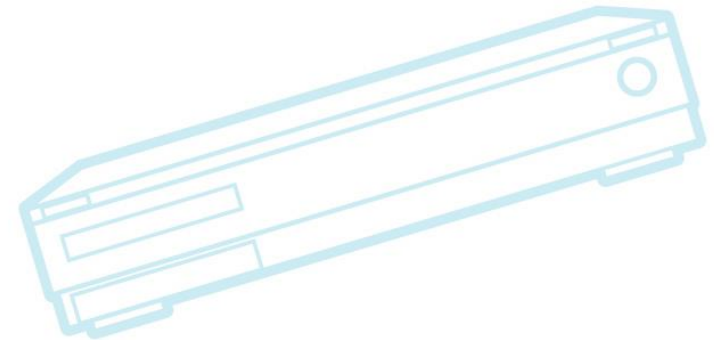
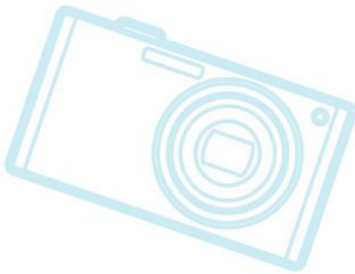
181130_1306



CE Workgroup

Nature of this talk...

- Quick overview of lots of embedded topics
- A springboard for further research
 - If you see something interesting, you have a link or something to search for
- Not comprehensive!
 - Just stuff that I saw





CE Workgroup

Outline

Kernel Versions
Technology Areas
CE Workgroup Projects
Other Stuff
Resources



CE Workgroup

Outline

Kernel Versions

Technology Areas

CE Workgroup Projects

Other Stuff

Resources



CE Workgroup

Kernel Versions

- Linux v4.15 – 28 Jan 2018 – 77 days
 - Included Spectre and Meltdown fixes
- Linux v4.16 – 1 Apr 2018 – 63 days
- Linux v4.17 – 3 Jun 2018 – 63 days
- Linux v4.18 – 12 Aug 2018 – 70 days
- Linux v4.19 – 22 Oct 2018 – 71 days
 - **Author: Greg Kroah-Hartman**
- Now on Linux v4.20-rc4
 - Expect 4.20 on Dec 23



CE Workgroup

Linux 4.15

- Cramfs supports mapping persistent memory
 - Can use for XIP
- AMD display core system accepted
- Device tree compiler has support for overlays
- RISC-V support
- Spectre/Meltdown mitigations
 - KPTI
 - retpolines



CE Workgroup

Linux 4.16

- Initial support for the Jailhouse hypervisor
- eBPF support for functions
- arm64 mitigations for Spectre and Meltdown
- More Spectre mitigations (general)
 - `array_index_nospec()`
- High resolution timers now have two modes, to allow them to be run in software interrupt context



CE Workgroup

Linux 4.16 – cont.

- F2FS miscellaneous improvements
- Slimbus and Soundwire sub-systems added
 - These are MIPI audio bus standards
- Flex and Bison are required for kernel build



CE Workgroup

Linux 4.17

- 8 old architectures dropped
 - Blackfin, CRIS, FRV, M32R, Metag, MN10300, Score, Tile
 - Removes about 460K lines of code
 - Only 3rd time ever that a kernel release has shrunk
- Rework of kernel idle loop
- Finished full in-kernel TLS protocol support
- Improved CPU load estimation



CE Workgroup

Improved CPU load estimation

- Is a modification of the per-entity load-tracking (PELT) mechanism
 - PELT decays the load information about processes too slowly
 - New estimator avoids this
- Load estimation can clamp more quickly
- Good for mobile and embedded
- Adds 1% scheduling overhead
 - Requires setting SCHED_UTILEST scheduler feature bit
- See <https://lwn.net/Articles/741171/>



CE Workgroup

Linux 4.17 – cont.

- A formal kernel memory-ordering model
 - With tests for formal proofs of adherence
 - See <https://lwn.net/Articles/718628/>
- Kernel build now requires gcc 4.5 or later on x86
 - This is a problem for some architectures where gcc has dropped support
 - But there's a workaround:
 - <https://lists.linuxfoundation.org/pipermail/ksummit-discuss/2018-September/005554.html>
- Changes to x86 system call implementation



CE Workgroup

Linux 4.18

- power domains now support active state management
 - Instead of enable/disable, can now handle different idle states (continuum of operation)
 - <https://lwn.net/Articles/744047/>
- fscrypt supports Speck128 and Speck256 ciphers
 - Somewhat controversial ciphers
 - Enables encryption for lowest-end devices
- bpf filter user mode helper system
 - <https://lwn.net/Articles/755919/>



CE Workgroup

bpfilter user mode helper

- Complicated mechanism to:
 - compile user space code
 - from the Linux source tree
 - bundled in a kernel loadable module file (.ko)
 - with execution initiated from kernel space
 - code runs in a user-space process
 - communicates via two pipes

Backwards compatibility with netfilter

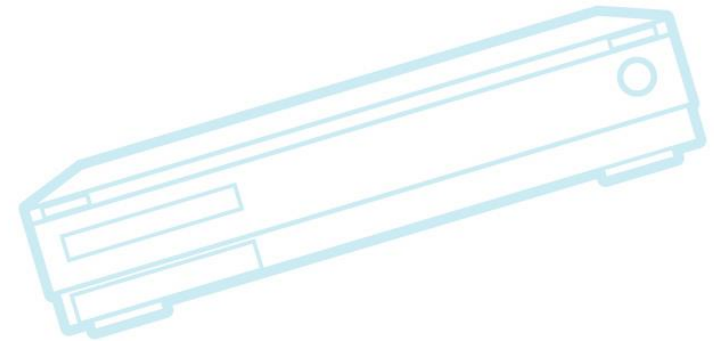
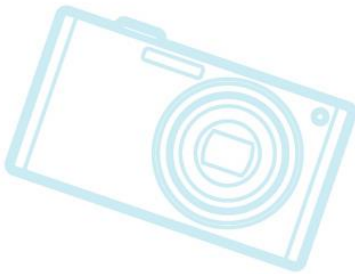
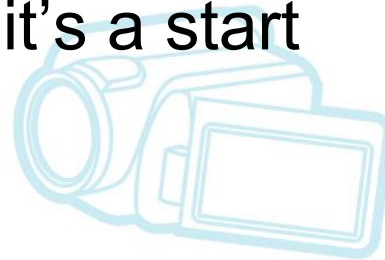
- compiles iptable rules to BPF
- As a mechanism, may lead to all kinds of crazy stuff



CE Workgroup

Linux 4.18 - cont.

- Support for Qualcomm Snapdragon 845
 - Use in high-end mobile devices
 - Support is incomplete, but it's a start





CE Workgroup

Linux 4.19

- L1TF mitigation (a variant of meltdown)
 - <https://lwn.net/Articles/762570/>
 - The fun continues...
- time-based packet transmission
 - Allows a program to schedule data for transmission in the future
 - <https://lwn.net/Articles/748879/>
- EROFS – enhanced read-only filesystem
 - High-performance
 - Good for certain embedded situations
 - (in staging)



CE Workgroup

Linux 4.19 - cont.

- block I/O latency controller
 - regulates latency instead of bandwidth
 - <https://lwn.net/Articles/758963/>
- Common Applications Kept Enhanced (CAKE) queuing discipline
 - devices behind consumer-level routers on relatively slow broadband links
 - <https://lwn.net/Articles/758353/>



CE Workgroup

Linux 4.19 - cont.

- new asynchronous polling interface
 - yet another API, not a replacement for existing APIs
 - <https://lwn.net/Articles/743714/>
 - https://kernelnewbies.org/Linux_4.19#New_asynchronous_l.2FO_polling_interface



CE Workgroup

Linux 4.20 (expected)

- C-SKY processor architecture support
- XArray data structure
 - a reworking of the radix tree structure
 - the page cache has been converted to use it
 - <https://lwn.net/Articles/745073/>
 - <https://linuxplumbersconf.org/event/2/contributions/259/>
- PCI subsystem support of peer-to-peer DMA operations between peripherals (P2PDMA)
 - <https://lwn.net/Articles/767281/>



CE Workgroup

Linux 4.20 (expected) - cont.

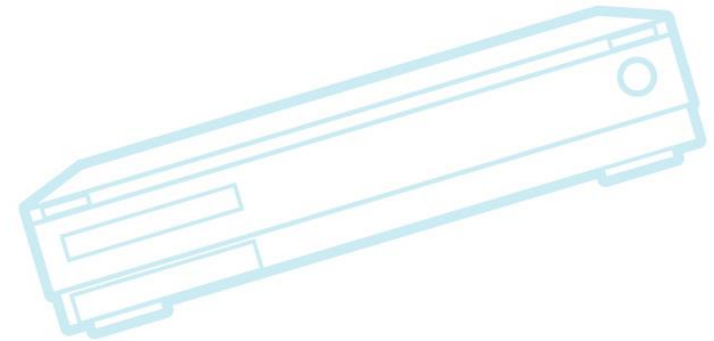
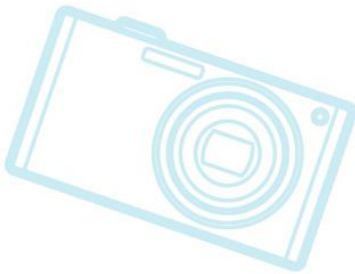
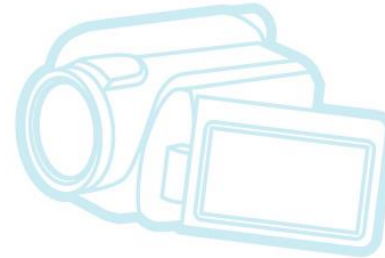
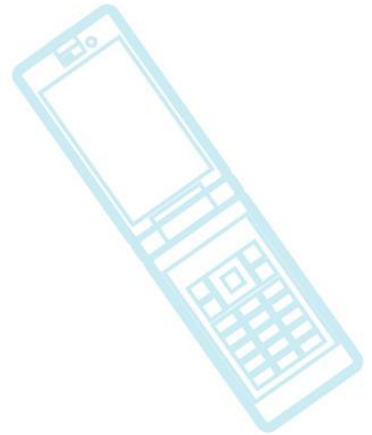
- Many block drivers converted to multiqueue API
 - Plan to remove the legacy API in the next development cycle
 - <https://lwn.net/Articles/552904/>



CE Workgroup

Linux 4.20 (expected)

- new filesystem mounting API
 - <https://lwn.net/Articles/759499/>



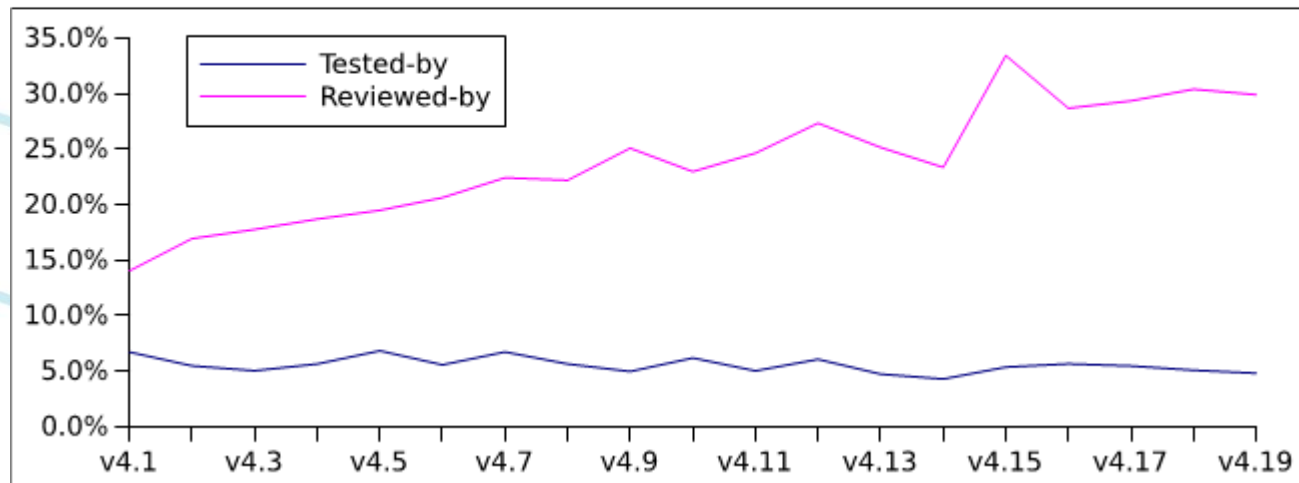


CE Workgroup

Contributor stats for 4.19

- 14,043 non-merge commits
- 552K lines added, 245K lines removed
- 307K more lines added than removed*
- 1710 developers
 - 253 made their first contribution

% of patches carrying test/review tags



Source: <https://lwn.net/Articles/767635>



CE Workgroup

Outline

Kernel Versions

Technology Areas

CE Workgroup Projects

Other Stuff

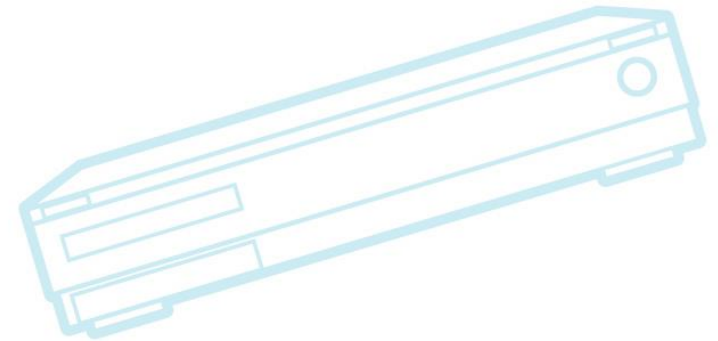
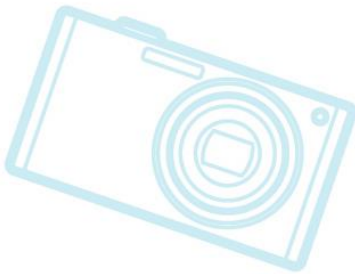
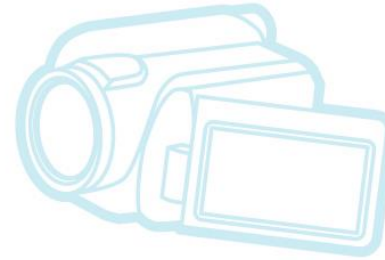
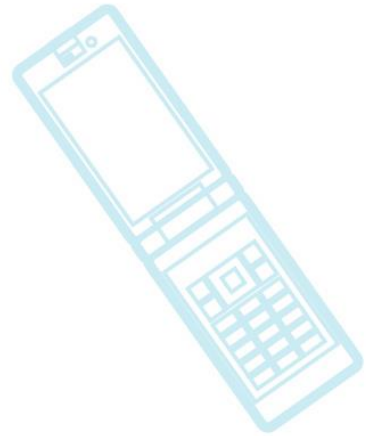
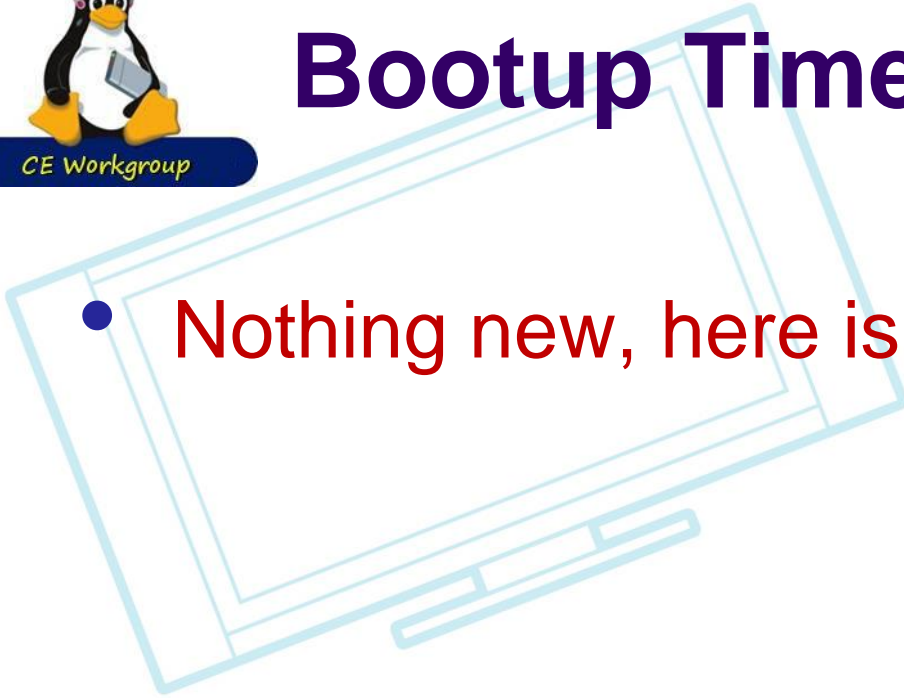
Resources



CE Workgroup

Bootup Time

- Nothing new, here is older stuff...





CE Workgroup

Device Tree

- Device Tree validation
 - Schema for binding language, validator for bindings and for device tree data
 - Patches from Rob Herring under review
 - Expect change to require bindings in new format
 - YAML encoded output format option for dtc
- dtc compiler build checks
 - 19 commits add warnings since February 2017
- Device Tree specification replaced ePAPR



Device Tree - cont.

- Size reductions
 - dtc deletes unreferenced nodes annotated with: `/omit-if-no-ref/`
 - reduce size of struct `device_node`
 - eg `full_name` no longer includes node path
 - use `%pOF` for warnings and errors
 - field removal savings only if not using overlays
 - Nicolas Pitre report of a test case:
 - went from 118072 bytes down to 11732 bytes
 - <https://elinux.org/images/e/e0/Size-kernel-fdt.pdf>



CE Workgroup

Device Tree - cont.

- Overlays
 - Quit hand coding overlay metadata:
 - fragment nodes, __*__ nodes
 - dtc will generate the metadata
 - U-Boot support to apply overlays
 - more robust than run time overlay apply
 - memory leak checks added, with ERRORS and WARNINGS
 - https://elinux.org/images/8/86/Overlay_frank.pdf



CE Workgroup

File Systems

- EROFS – enhanced read-only filesystem (4.19)
 - High-performance
 - Good for certain embedded situations (in staging)
 - expect on-media format to change



CE Workgroup

File Systems - cont..

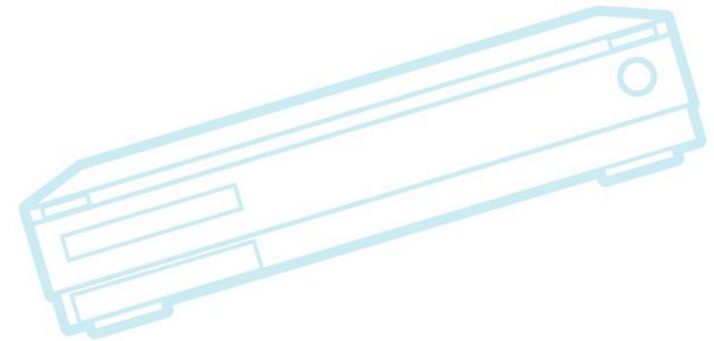
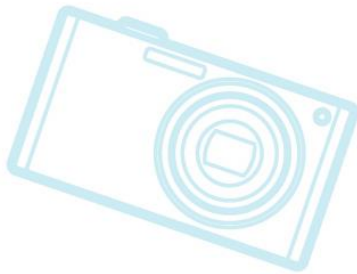
- F2FS
 - Miscellaneous fixups (4.17)
 - Lost & Found support
 - Better tuning for low_end devices
 - See https://www.phoronix.com/scan.php?page=news_item&px=F2FS-Lost-Found



CE Workgroup

Graphics

- Nothing new, here is older stuff...
- Working on support for virtual reality
 - LCA 2018 *Driving Virtual Reality from Linux* - Keith Packard





CE Workgroup

GPU drivers

- Nothing new, here is older stuff...
- ELC 2018 *Progress in the Embedded GPU Ecosystem* – by Robert Foss
 - Watch the video – the slides don't have enough text
 - Nvidia, Intel, AMD, Broadcom, Qualcomm, Vivante have upstream support
 - Of varying quality
 - ARM – some stuff happening recently with Mali T series, but not upstreamed yet.



CE Workgroup

Networking.

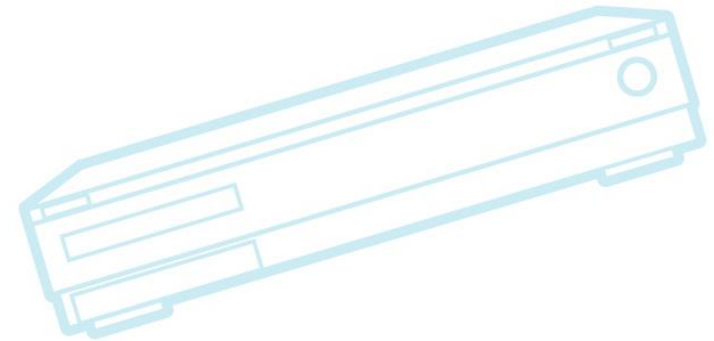
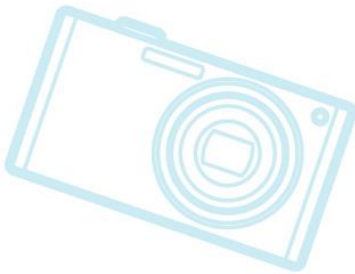
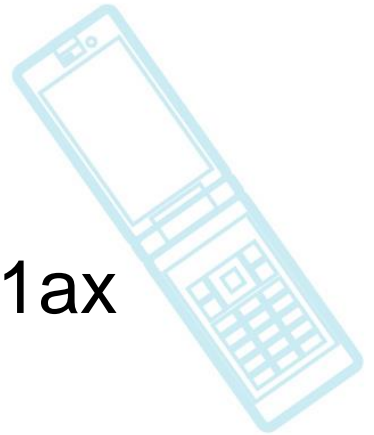
- Time Sensitive Networking
 - ELC 2018 *The Road Towards a Linux TSN Infrastructure* – Jesus Sanchez-Palencia
 - ELCE 2017 *Deterministic Networking for Real-Time Systems (Using TSN)* – by Henrik Austad
- Time-based packet transmission
 - Allows a program to schedule data for transmission in the future
 - <https://lwn.net/Articles/748879/>
- Bluetooth 5 – supported



CE Workgroup

Networking - cont.

- experimental support for future 802.11ax standard
 - also known as: Wi-Fi 6
 - <https://www.wi-fi.org/news-events/newsroom/wi-fi-alliance-introduces-wi-fi-6>





CE Workgroup

Power management.

- Rework kernel idle loop (in 4.17)
 - Prevent CPUs from spending too much time in shallow idle states
 - Reduces idle power on some systems by 10% or more
 - See
 - <https://www.phoronix.com/scan.php?page=article&item=linux-417-power>
 - <https://lkml.org/lkml/2018/4/11/337>
- power domain state management (4.18)
 - Instead of enable/disable, can now handle different idle states (continuum of operation)
 - <https://lwn.net/Articles/744047/>



Power Management.

- Presentations:
 - ELC 2018 *An Unbiased Look at the Energy Aware Scheduler (EAS)* – by Vital Wool
 - Qualcomm has their own big.LITTLE scheduler (QHMP)
 - QHMP does better than EAS in some regards
 - But cannot be mainlined (code is messy)
 - Want to use features of QHMP in EAS, which still has shortcomings



CE Workgroup

Real Time.

- RT-Preempt patches give good real-time performance
- RT-Preempt patch still out of tree
 - What's left:
 - Hotplug locking
 - Timer wheel rework
 - dentry cache locking
 - Lots work goes into maintaining RT trees out-of-mainline
 - Don't support every kernel release
 - Focused on supporting kernel LTS releases



Real Time - cont..

- Presentations
 - ELC 2018 *Steering Xenomai into the Real-Time Linux Future* – Jan Kiska
 - ELC 2018 *Not Really, but Kind of Real Time Linux* – Sandra Capri
 - Discusses how much RT performance you can get, without Preempt-RT patches
 - ELC 2018 *Preempt-RT Raspberry Pi Linux* – Tiejun Chen
 - Demonstrates that Preempt-RT is very effective on Raspberry Pi
 - ELC 2018 *Maintaining a Real Time Stable Kernel* – by Steven Rostedt



Security (review).

- Spectre and Meltdown
 - Break security via side-channel timing attacks using speculative execution
 - Variants 1, 2 (Spectre), and 3 (Meltdown)
- Is a family of vulnerabilities related to speculative execution
 - Many modern processors vulnerable
 - Many embedded processors not affected
- Very severe problem:
 - Can read data you're not supposed to
 - Vulnerability has existed for 20 years!
 - Cannot be fixed with CPU firmware updates
 - Mitigations are expensive



Security.

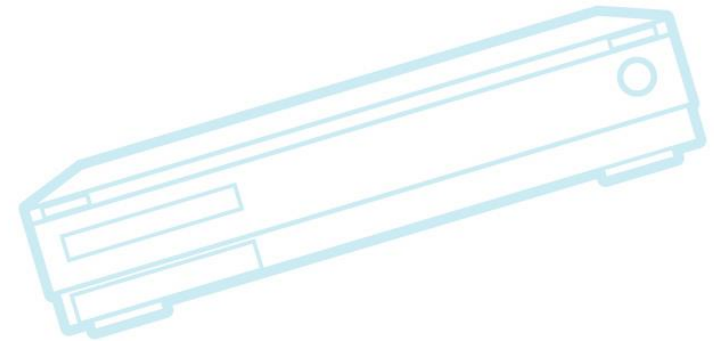
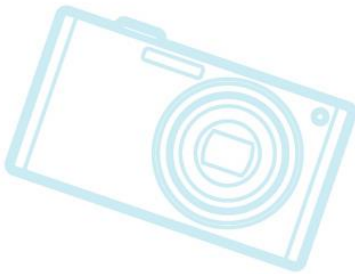
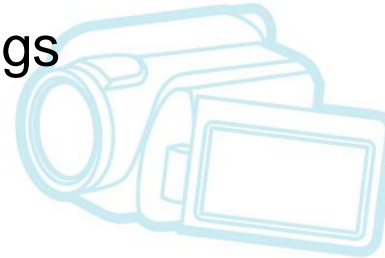
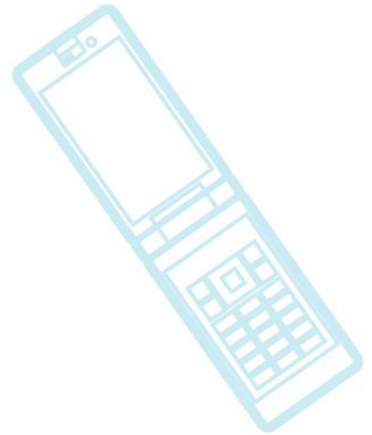
- New Spectre variants
 - Variant 3a – Rogue System Register Read
 - Variant 4 – Speculative Store Bypass
- New Meltdown variant
 - L1TF – L1 Cache terminal fault vulnerability
- No surprise
 - We were expecting new variations of speculative execution vulnerabilities to be discovered
- Fixes are:
 - More microcode updates for Intel processors
 - Kernel patches to use new speculative execution control flags
- See <https://lwn.net/Articles/755114/>



CE Workgroup

Security - cont.

- Spectre and Meltdown
 - Patches continue to dribble in
 - x86, ARM64, PowerPC
 - generic code, from gcc warnings

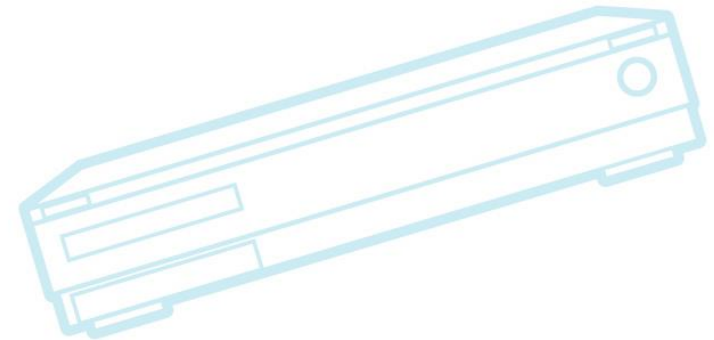
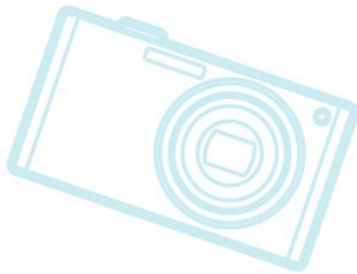
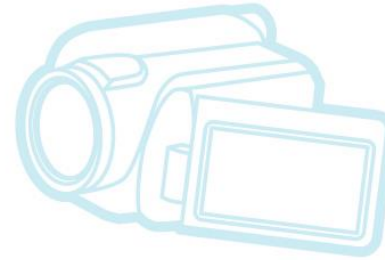
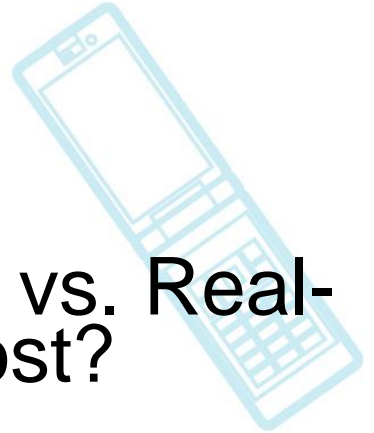




CE Workgroup

Real Time / Security

- ELCE 2018 Spectre and Meltdown vs. Real-Time: How Much do Mitigations Cost?
 - Ralf Ramsauer
 - Jan Kiszka
 - Wolfgang Mauerer





CE Workgroup

Security Presentations.

- ELC 2018 *Secure Boot from A to Z* – by Quentin Schulz and Mylune Josserand
 - Overview of secure boot techniques and issues



CE Workgroup

System Size..

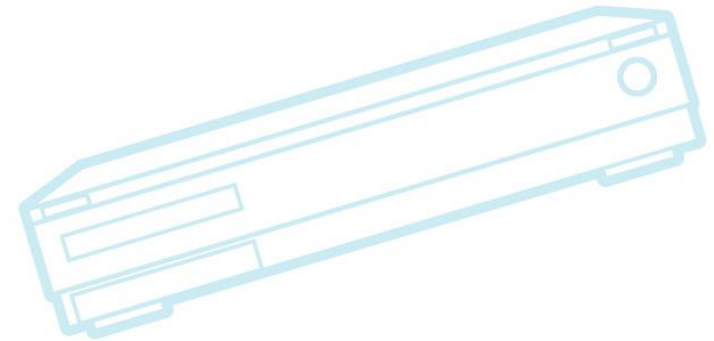
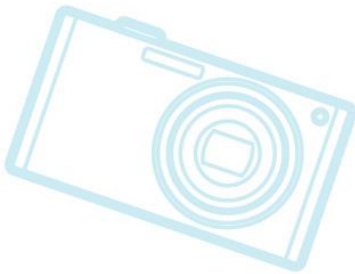
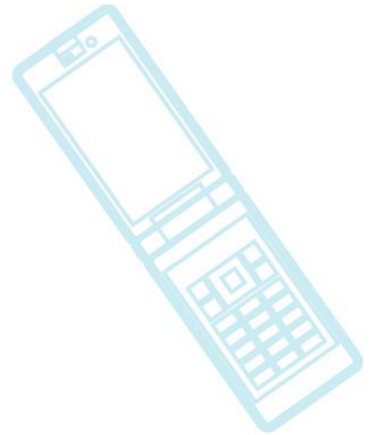
- See Devicetree.
- Presentations
 - ELC 2018 *Poky-tiny and Beyond, or Trying to the put Yocto in Yocto Project* – by Scott Murray
 - Gives status of poky-tiny project, available for Yocto Project
 - ELC 2018 BoF: *Embedded Linux Size* – By Michael Opdenacker
 - Great overview of reduction techniques and status
 - Toybox and musl (smaller libc) are worth looking at
 - Long list of things that can be worked on



CE Workgroup

Testing.

- Kselftest
- Fuego
- Kernelci.org
- LKFT
- Work to make 'next' more testable

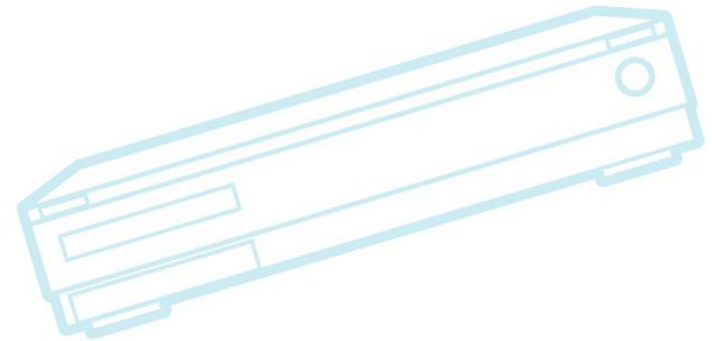
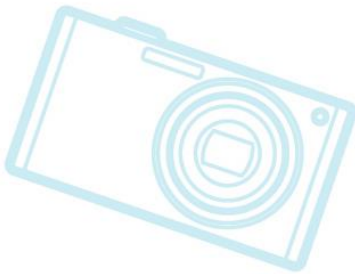
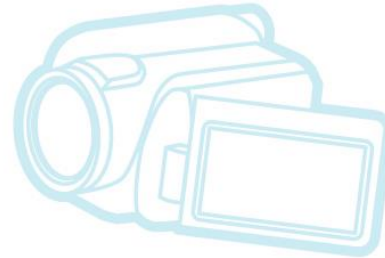
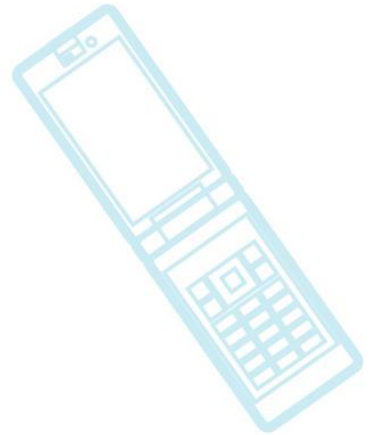
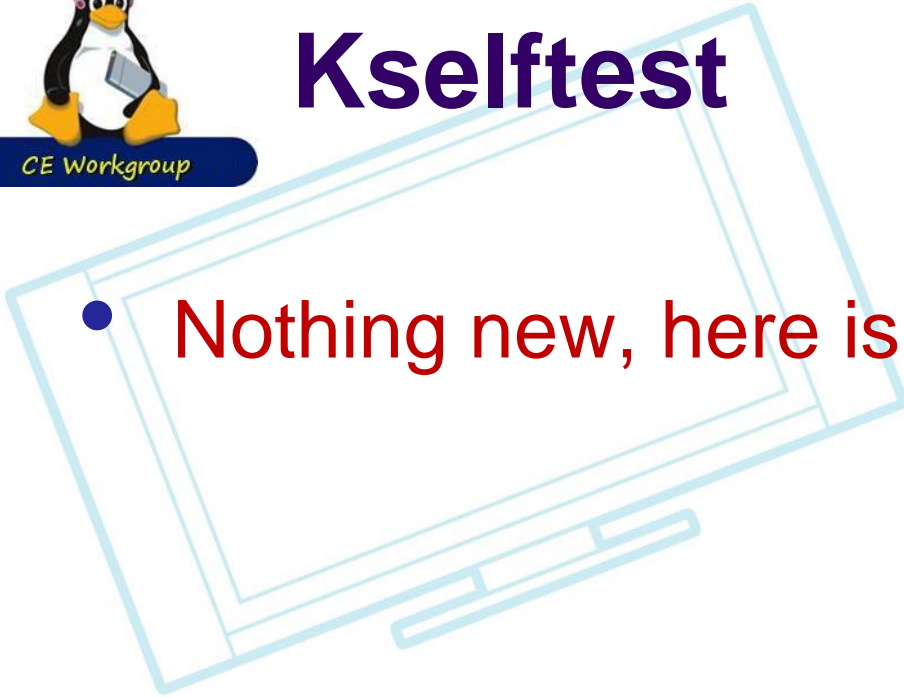




CE Workgroup

Kselftest

- Nothing new, here is older stuff...





CE Workgroup

Fuego.

- Test Framework for collaborating on tests and test infrastructure for Linux
- v1.3 released May 2018
 - More report output formats (rst, csv, excel, html, pdf)
 - Hardware board control
 - Test phase execution
- Tests being added on a consistent basis
 - 18 new tests in 1.3 release (some are self-tests)
 - 7 are realtime tests
- Presentation:
 - Japan Jamboree 63: *Fuego Status and Roadmap December 2017* – by Tim Bird



CE Workgroup

Kernelci.org

- Does continuous build/boot testing of kernel
 - Builds 126 trees continuously, reports any errors
- Working on creating a project in Linux Foundation (more later)
- 10 labs with 250 boards and 37 SoCs being tested
- Has done 4,000,000 boots
- Added Auto-bisection
- Adding post-boot testing
- <https://lwn.net/Articles/772525/>



CE Workgroup

LKFT.

- Linux Kernel Functional Testing
 - Relatively new Linaro kernel testing effort
 - Focused on Functional testing (as opposed to build/boot testing)
 - Focused on embedded devices
- Presentation:
 - ELC 2018 *Keeping Up With LTS: Linux Kernel Functional Testing (LKFT) on Devices* – Thomas Gall



Making 'next' more testable.

- Linux-next is the integration tree used during the kernel release cycle
- It's hard to test, because things break a lot
 - Automated testing doesn't work
- Stephen Rothwell (the 'next' maintainer) created a 'fixes' branch
- Isolates fixes intended for next release, from other code being integrated into 'next'
 - Should not break automated testing rigs as much
- Result: fixes will get more testing in 'next'



CE Workgroup

Toolchains.

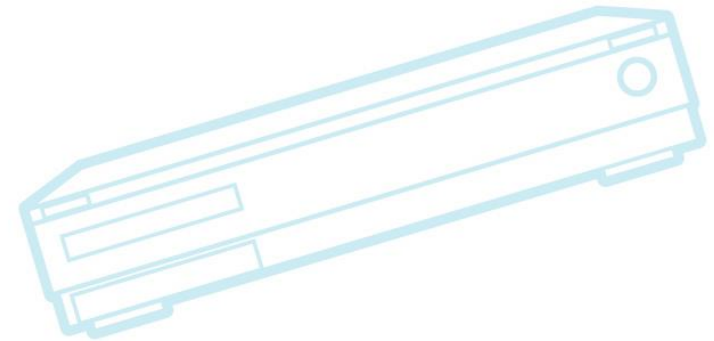
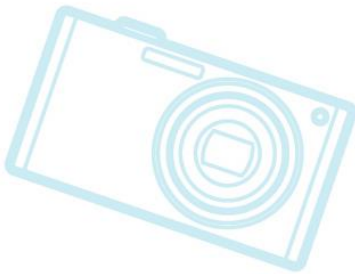
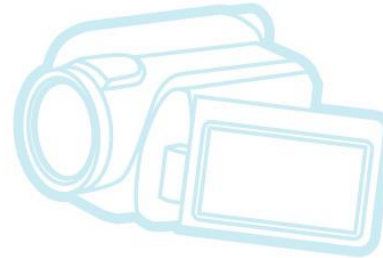
- gcc 8
 - Major effort on usability improvements
 - Provides much better messages for some errors
 - Shows fix-it hints
 - Shows what to change to fix the error
 - Can be automatically processed
 - Detects missing include files, saying which files are needed
 - See <https://lwn.net/Articles/749450/>, and
 - <https://developers.redhat.com/blog/2018/03/15/gcc-8-usability-improvements/>



CE Workgroup

Toolchains - cont.

- minimum version changed to gcc 4.6

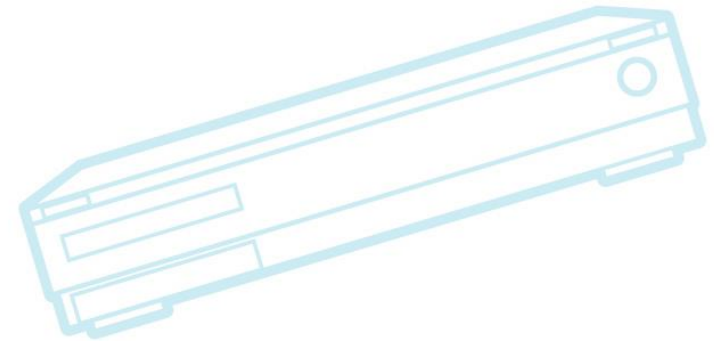
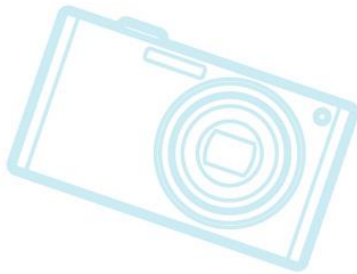




CE Workgroup

Tracing

- Nothing new, here is older stuff...
- Dynamic function tracing events
 - Ability to create a tracepoint for a function at runtime
 - Goal is to avoid having a tracepoint become part of kernel ABI
 - Is work-in-progress
 - See <https://lwn.net/Articles/747256>

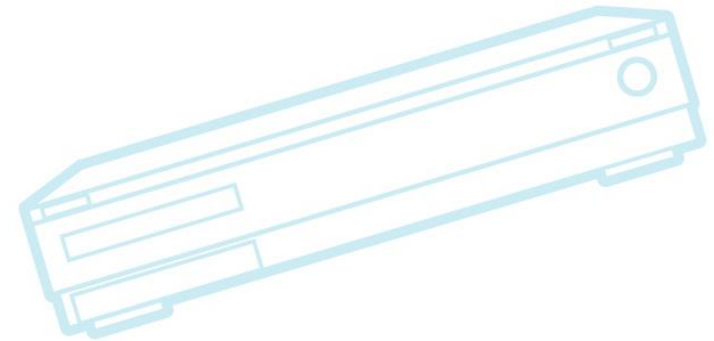
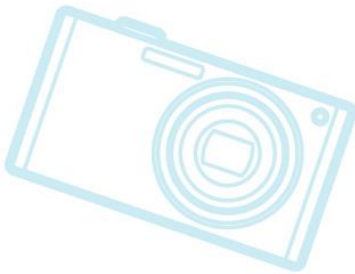
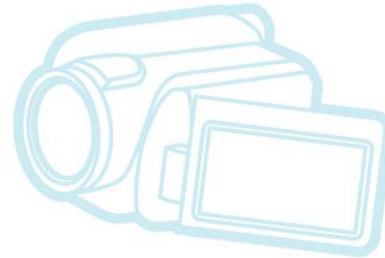
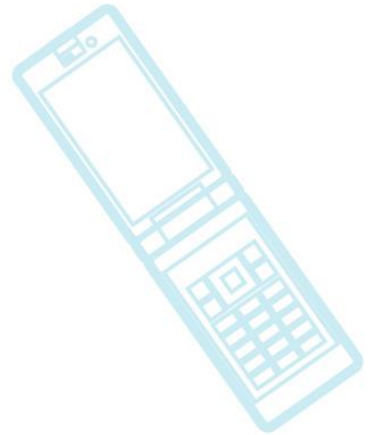




CE Workgroup

Miscellaneous

- Year 2038 work
- Git protocol version 2
- Android kernel status





CE Workgroup

Year 2038 work.

- Status update:
 - Lots of small driver fixes in 4.16
 - Changes to system call entry points for timekeeping related syscalls
 - Patches for structures with new 64-bit timestamps have been submitted
 - Still need more work converting the VFS layer
 - Lots of stuff intended to land in 4.18
- See <https://www.mail-archive.com/linux-kernel@vger.kernel.org/msg1674216.html>



CE Workgroup

New git protocol (version 2).

- 3x performance improvement for no-op fetches on repositories containing 500k references.
- 8x reduction of overhead bytes sent from server
 - Due to filtering references to those the client expressed interest in
- Worked on by Google
 - See <https://opensource.googleblog.com/2018/05/introducing-git-protocol-version-2.html>



CE Workgroup

Android kernel status.

- Progress being made
- diff from 4.14 Android and LTS
 - 432 files, 41K changes
 - sdcard, netfilter, Energy Aware Scheduling, USB gadgets
- Linaro doing android mainline tracking
 - Test Android-common patches on latest mainline Linux
- ELC 2018 *Android Common Kernel and Out of Mainline Patchset Status* – by Amil Pundar



CE Workgroup

Android kernel status - cont.

- **Bringing the Android kernel back to the mainline**
 - Summary of Linux Plumbers talk
 - <https://lwn.net/Articles/771974/>



CE Workgroup

Outline

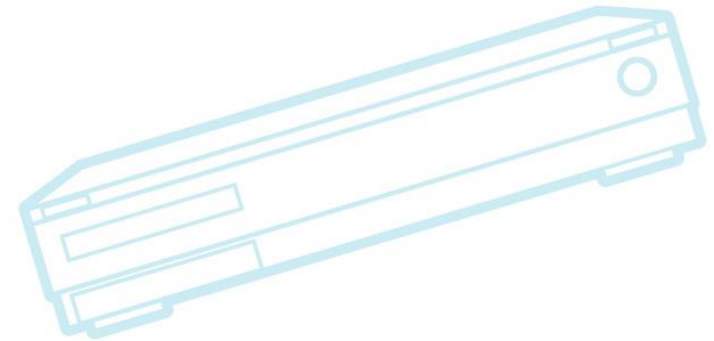
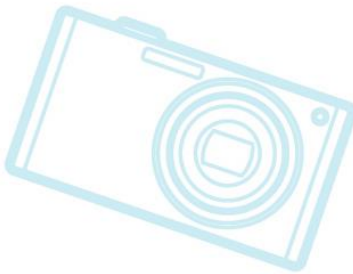
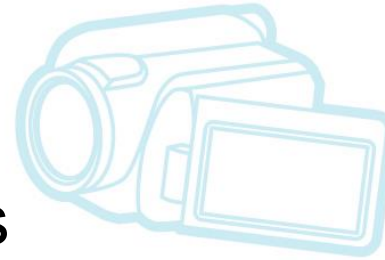
Kernel Versions
Technology Areas
CE Workgroup Projects
Other Stuff
Resources



CE Workgroup

Projects and initiatives.

- Shared Embedded Distribution
- LTSI
- Automated Testing
 - Fuego
 - Automated Test Standards
- eLinux wiki





CE Workgroup

Long Term Support Initiative

- LTSI 4.14.75-ltsi is current LTSI kernel
 - <https://ltsi.linuxfoundation.org/software/releases>
- Most of industry is using LTS or LTSI
- Using upstream-first policy for patches
- Security fixes are very important
- Presentation:
 - ELCE 2018 Technical Showcase poster:
Longterm Embedded Linux: Testing & Field Update - Pengutronix



CE Workgroup

Long Term Stable Releases

Version	Maintainer	Released	Projected EOL
3.16	Ben Hutchings	2014-08-03	Apr, 2020
4.4	Greg Kroah-Hartman	2016-01-10	Feb, 2022
4.9	Greg Kroah-Hartman	2016-12-11	Jan, 2023
4.14	Greg Kroah-Hartman	2017-11-12	Jan, 2020
4.19	Greg Kroah-Hartman	2018-10-22	Dec, 2020

Source: <https://www.kernel.org/category/releases.html>



CE Workgroup

Fuego - Linux Test Framework.

- CELP funding for Fuego self-test project
- Fuego now has an integrated release test
 - A Fuego job to build the Fuego docker container from scratch, and test it
 - Includes tests of user interface using Selenium and Chromium
 - This adds packages to base Fuego distribution for doing this type of web-based and image-based testing
- Work completed by ProFusion Embedded Systems



CE Workgroup

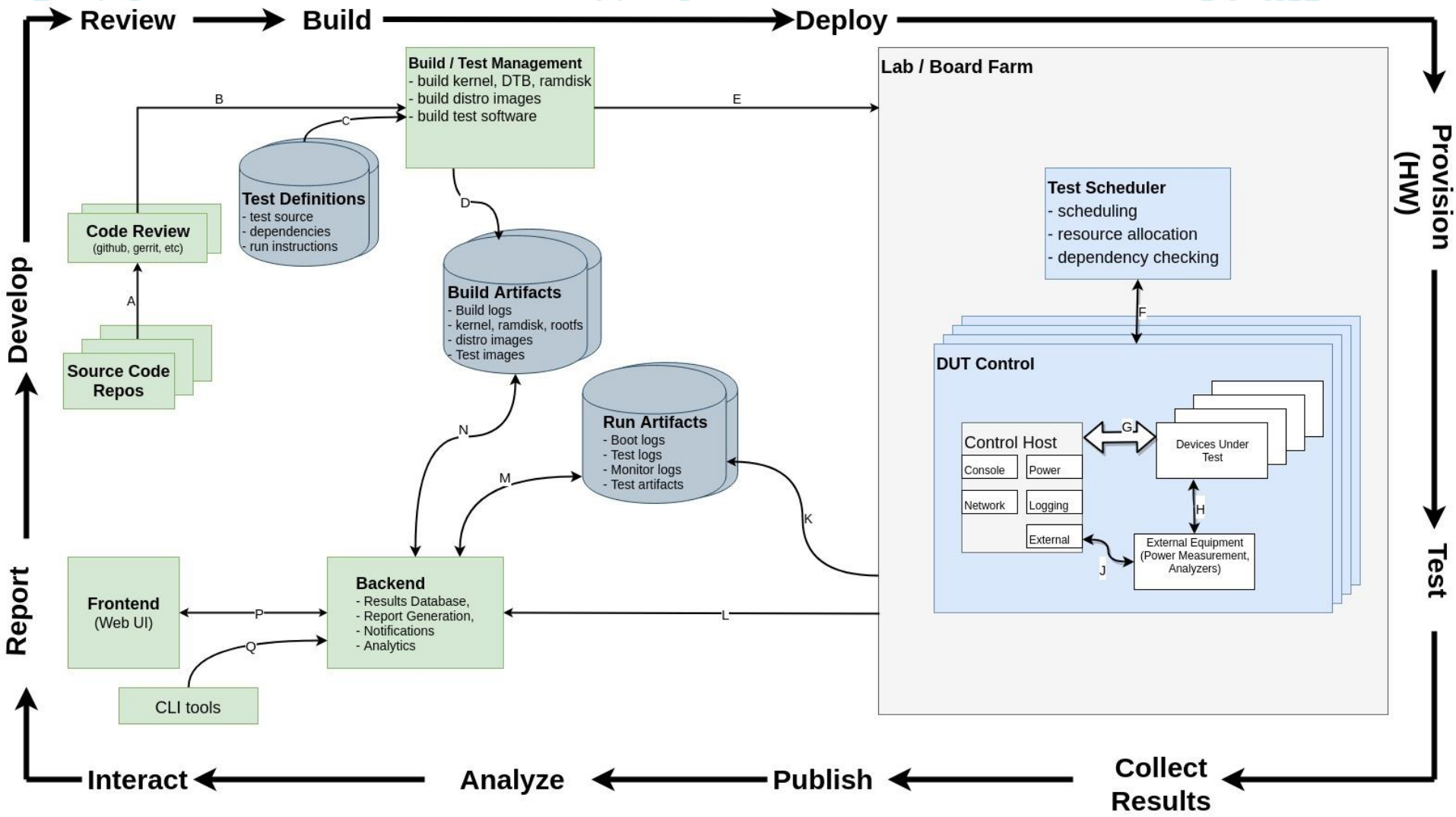
Automated Testing Standards

- Automated Testing Summit after ELCE
 - https://elinux.org/Automated_Testing_Summit
 - minutes, slides, videos, action items
 - see <https://lwn.net/Articles/771782>
- First standards by summit attendees will be:
 - test definition
 - results format
 - test execution API
- Discussions on:
 - automated-testing@yoctoproject.org



CE Workgroup

Continuous Integration Loop (high level diagram)





CE Workgroup

eLinux wiki.

- <http://elinux.org>
 - Web site dedicated to information for embedded Linux developers
 - The wikipedia of embedded linux!
- Hundreds of pages covering numerous topic areas: bootup time, realtime, security, power management, flash filesystem, toolchain, editors
- **Slides and Videos for 13 years of ELC!!**
- Please use and add to site



CE Workgroup

eLinux wiki..

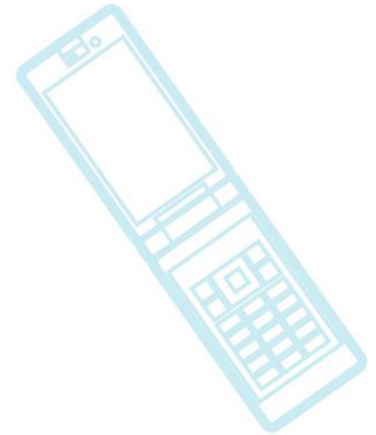
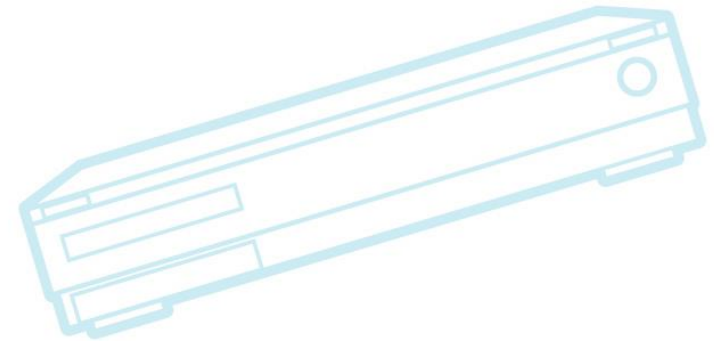
- Recent topics
 - Board farm and automated testing pages
 - Lots of Renesas board information
 - Developer guidelines
 - Community Doc Translation
 - Event pages (ELC, Jamboree, and others)
 - Test resources.



CE Workgroup

Outline

Kernel Versions
Technology Areas
CE Workgroup Projects
Other Stuff
Resources

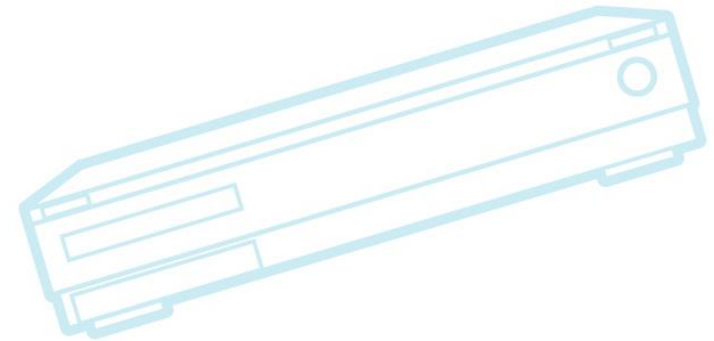
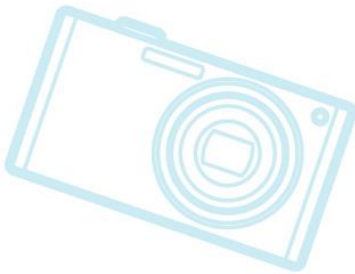
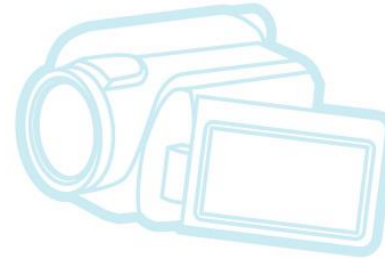
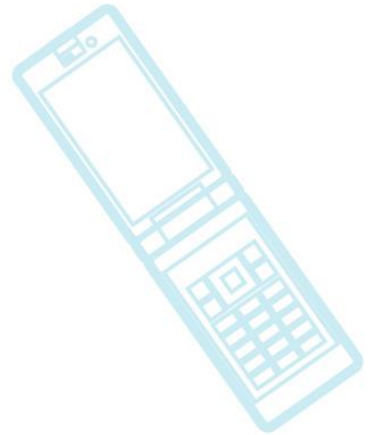




CE Workgroup

Other Stuff

- Community issues
- Trade associations
- Conferences
- Legal issues
- Industry changes

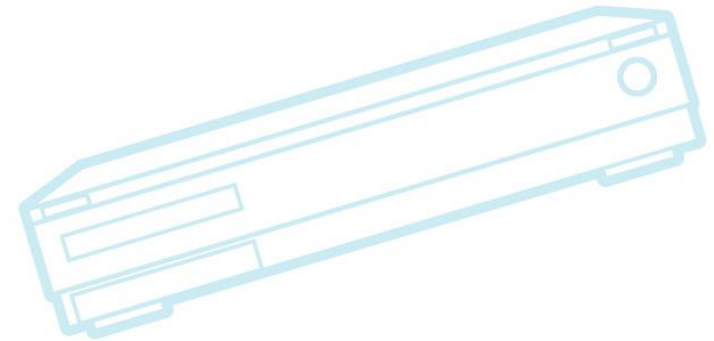
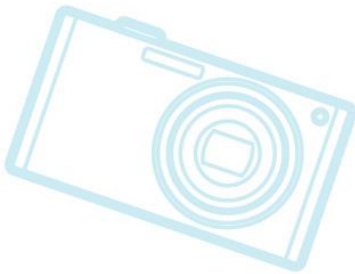
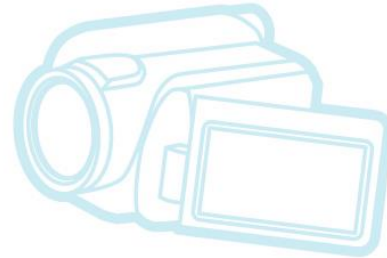
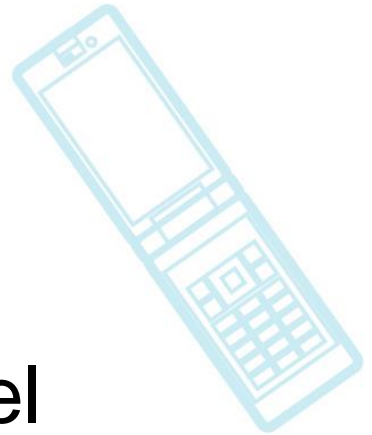




CE Workgroup

Community issues

- Linus takes a break!!
- New Code of Conduct for the kernel community





CE Workgroup

Linus takes a break.

- Linus announced on Sept. 16 (4.19-rc4) that he's taking a break
- Made an apology for “flippant attacks in emails that have been both unprofessional and uncalled for”
- Announced that Greg Kroah-Hartman will take his place for 4.19 release cycle
- See
 - <https://lkml.org/lkml/2018/9/16/167>
 - <https://lwn.net/Articles/765108>



CE Workgroup

Linus' break - cont...

- Linus says he's not burnt out, but will be back
- Needs time to reflect
- Is seeking help on how to behave differently
 - BBC article: Linus Torvalds: "I'll never be cuddly but I can be more polite"
 - <https://www.bbc.com/news/technology-45664640>
- Attended Maintainer's Summit in Edinburgh (October 22)
- He is back: 4.20 merge window.



CE Workgroup

New Code of Conduct.

- Linus also accepted a patch from GregKH that replaces the “code of conflict” with a new “Code of Conduct”
- Based on widely used Contributor Covenant (version 1.4)
- Lots of discussion in community about CoC
 - Concern over new responsibilities for maintainers
 - led to deletion of some maintainer responsibilities
 - Uncertainty over enforcement policies



CE Workgroup

New Code of Conduct

- Patch from GregKH added an interpretation document
 - Documentation/process/code-of-conduct-interpretation.rst
 - Documentation/process/code-of-conduct.rst
- Discussion in community continued
 - <https://lwn.net/Articles/765108/>
 - <https://lwn.net/Articles/766699/>
- Discussion: Maintainers Summit
 - <https://lwn.net/Articles/769117/>
- Discussion: Linux Plumbers conference
 - <https://lwn.net/Articles/772565/>



CE Workgroup

Trade associations

- Linux Foundation
 - Possible creation of KernelCI Testing project
 - KernelCI developers working on getting additional sponsors for project
 - Project may expand scope (remains to be seen)



CE Workgroup

Conferences.

- Embedded Linux Conference 2018
 - March 12-14, Portland, Oregon, USA
 - See https://elinux.org/ELC_2018_Presentations
 - Did really good at collecting slides and videos
- Japan Jamborees
 - Continuing
- Open Source Summit Japan/Automotive Linux Summit
 - June 20-22, Tokyo, Japan



CE Workgroup

Conferences - cont.

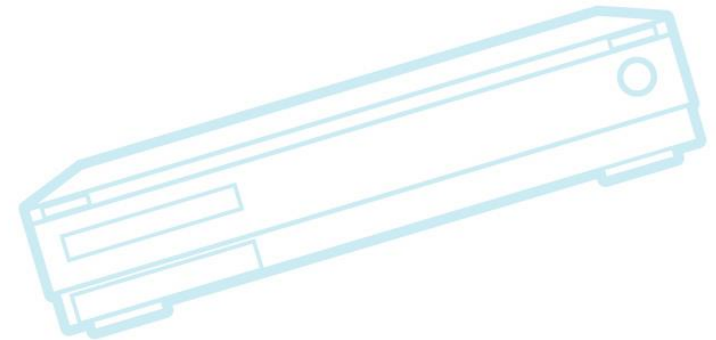
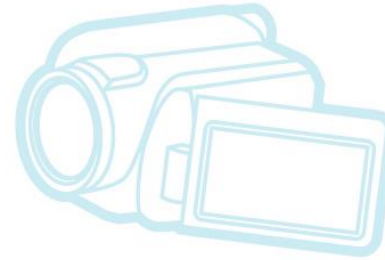
- ELC Europe 2018
 - October 22-24, Edinburgh, Scotland
- Automated Testing Summit
 - October 25, Edinburgh, Scotland
 - https://elinux.org/ATS_2018_Minutes



CE Workgroup

ELCE 2018 topic clusters.

- Kernel drivers
 - Camera, Audio, others
- Testing
- Yocto Project
- Security
- Bootloader
- Virtualization
- Realtime
- Networking





CE Workgroup

Conferences - 2019.

- Embedded Linux Conference 2019
 - **August** 21-23, San Diego, California, USA
- Japan Jamborees
 - Continuing
- Open Source Summit Japan/Automotive Linux Summit
 - July 17-19 , Tokyo, Japan
- ELC Europe 2019
 - October 28-30, Lyon, France
- Linux Plumbers
 - November 8-11, Lisbon, Portugal



Legal issues.

- McHardy withdraws suit against Geniatech in Germany
- Geniatech fought back, with arguments:
 - Suit scope is too broad (covered all kernel versions, not just ones McHardy had contributed to)
 - Did not show that his commits fulfilled requirements for copyright protection
 - Did not show which of his commits were used by Geniatech
 - McHardy is not following community norms, with regard to GPL revocation terms
 - McHardy is approaching multiple companies for monetary gain



CE Workgroup

Legal issues cont..

- McHardy withdrawal – lessons learned:
 - Don't sign the cease-and-desist declaration
 - Ensure GPL compliance
 - Prepare a legal defense strategy
 - Geniatech arguments seem sound, and can be used elsewhere
- Community wants to fight McHardy, but still allow for proper legal enforcement of GPL
- See <https://lwn.net/Articles/752485/>
- Details: <http://laforge.gnumonks.org/blog/20180307-mchardy-gpl/>



CE Workgroup

Industry changes.

- Intel selling Wind River (March 2018)
 - <https://www.windriver.com/news/press/pr.html?ID=20982>
 - Not sure what this means for Yocto Project
 - Intel has discontinued Edison, Galileo and Joule
- Microsoft acquires github (June 2018)
 - <https://techcrunch.com/2018/06/04/microsoft-has-acquired-github-for-7-5b-in-microsoft-stock/>



CE Workgroup

Industry changes - cont.

- IBM to acquire Red Hat
 - <https://lwn.net/Articles/769762/>



CE Workgroup

Outline

Kernel Versions
Technology Areas
CE Workgroup Projects
Other Stuff
Resources



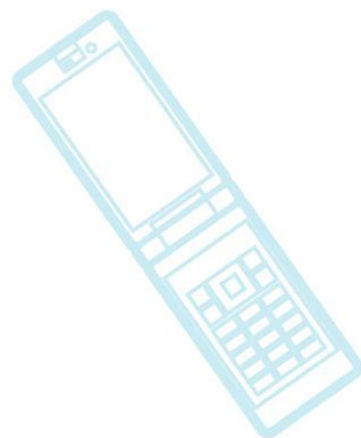
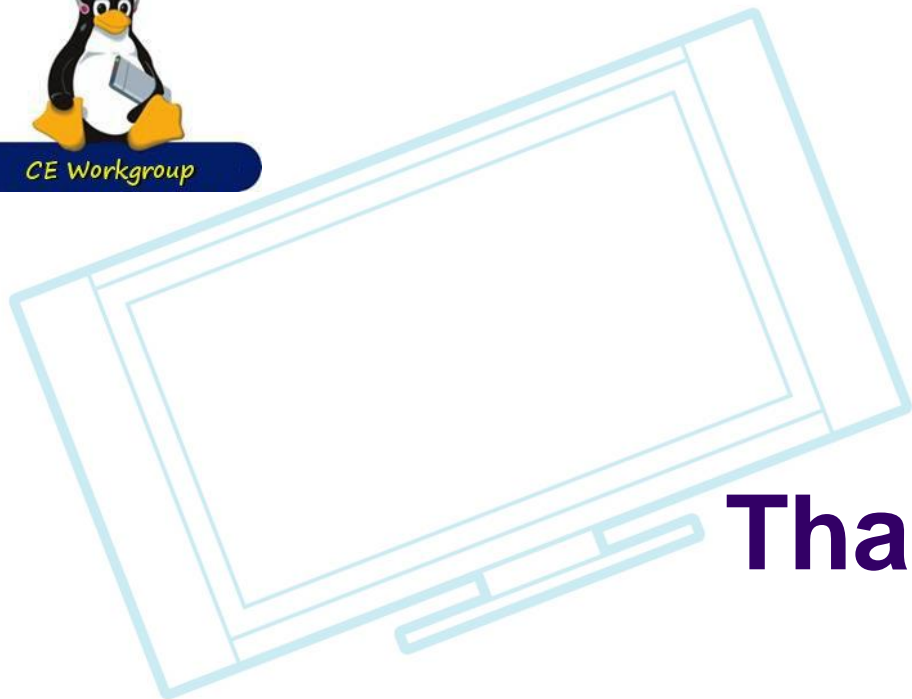
CE Workgroup

Resources

- LWN.net
 - <http://lwn.net/>
 - If you are not subscribed, please do so
- Kernel Newbies
 - http://kernelnewbies.org/Linux_4.??
- Phoronix
 - <https://www.phoronix.com/>
- eLinux wiki - <http://elinux.org/>
 - Especially <http://elinux.org/Events> for slides and videos



CE Workgroup



Thanks!

