

# A timeline for embedded Linux

Chris Simmonds

2net Ltd.

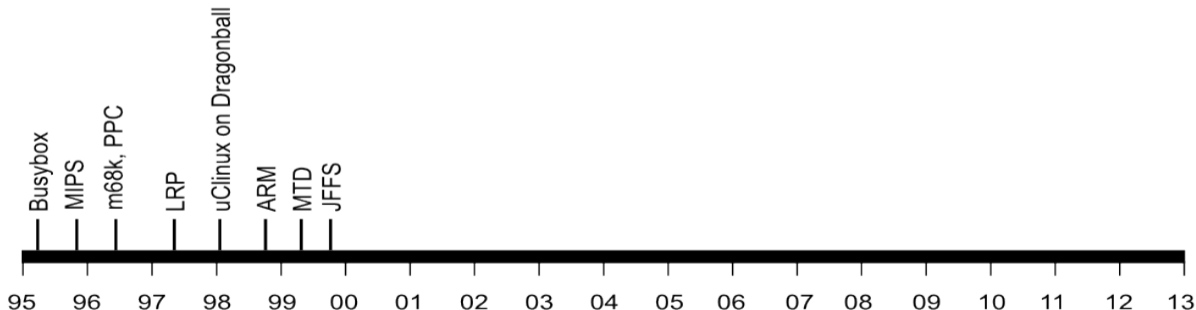
24th October 2013

# Chris Simmonds

- Has been using Linux as an embedded operating system since 1999
- Has been training others how to do the same since 2002
- Blog at <http://2net.co.uk/>

# The early days: 1995 to 1999

- By 1995 Linux was already attracting attention beyond desktop and server
- It just needed a few more steps to make it a real contender...



# Making Linux small

*1995*

*Busybox: a collection of command-line utilities*

*Created by Bruce Perens so that he could put the Debian installer on to a single 1.44 MiB floppy disk*

*Also ideal for embedded devices with limited storage*

# The Linux Router Project

1997

*The Linux Router Project (LRP): Dave Cinege used Busybox to create a Linux distribution on a floppy disk that turns a PC into a router*

1998

*David Täht and Greg Retkowski publish the "Arlan Wireless Howto"  
The first embedded Linux wireless router*

# Making the Linux code portable

*1995: MIPS*

*1996: m68k, ppc*

*1998: uClinux for m68k Dragonball on 3Com Palm Pilot*

*1999: ARM*

# Flash memory

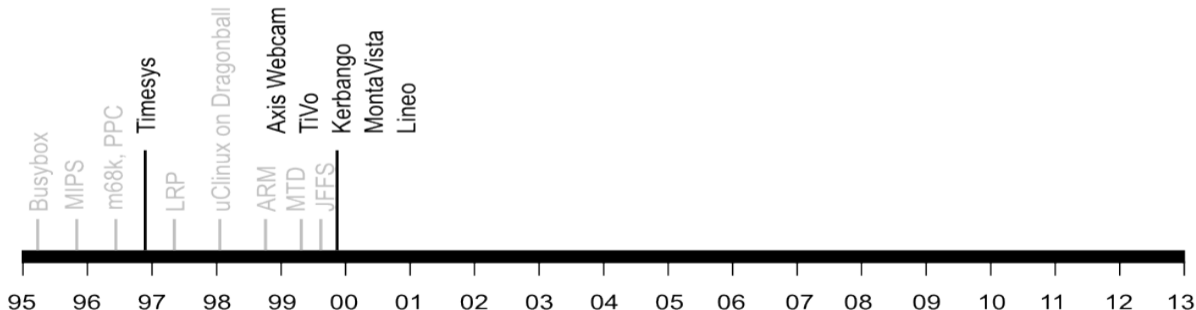
1999

*David Woodhouse begins work on the Memory Technology Devices (MTD) layer*

*Axis create a robust file system for the flash memory in the AXIS 2100 Network Camera. It was called JFFS (Journaling Flash File System)*

# Things start to happen: 1999

- The first products based on Embedded Linux appear
- Embedded Linux software companies emerge





# Things start to happen: 1999



AXIS 2100 Network  
Camera



TiVo DVR



Kerbango Internet radio

# Professional help

*1996: Timesys*

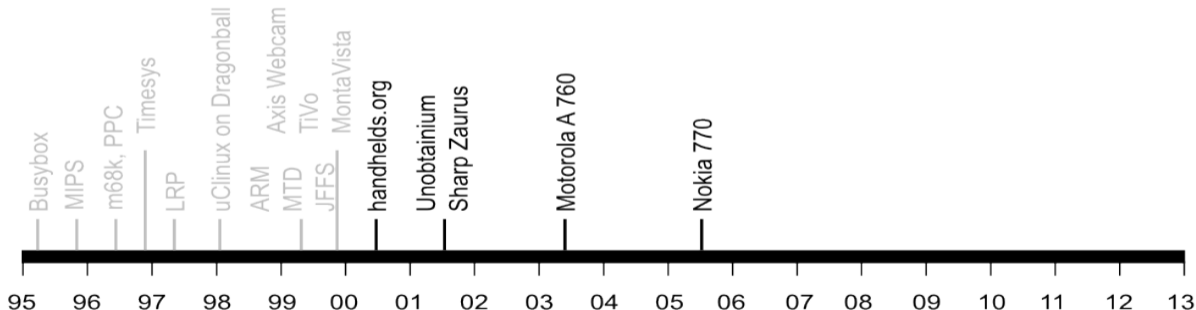
*1999: MontaVista*

*1999: Lineo*

*1999: Denx*

# Linux goes mobile: 2000 to 2005

- From early beginnings hacking on mobile hardware to a full mobile operating system

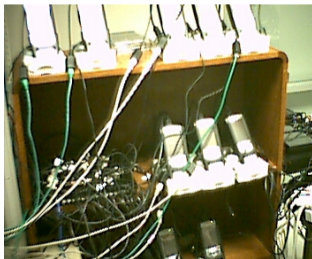


2000

*handhelds.org was a focus for porting Linux to a variety of portable devices, starting with the Compaq iPAQ H3600*



iPaq running X11



The build cluster

# The unobtainium

2001

*Project Mercury at Compaq put together a prototype mobile handset nicknamed the "Unobtainium"*

*iPaq 3600*

*GSM/CDMA/802.11b/Bluetooth*

*640x480 camera*

*1 GiB of storage on an IBM Microdrive*



# Zaurus

2001

*Sharp create the Zaurus SL-5000D PDA running Linux 2.4.10 (provided by Lineo)*



# Motorola handsets

2003

*Motorola A 760 handset (MontaVista Linux)*



2005

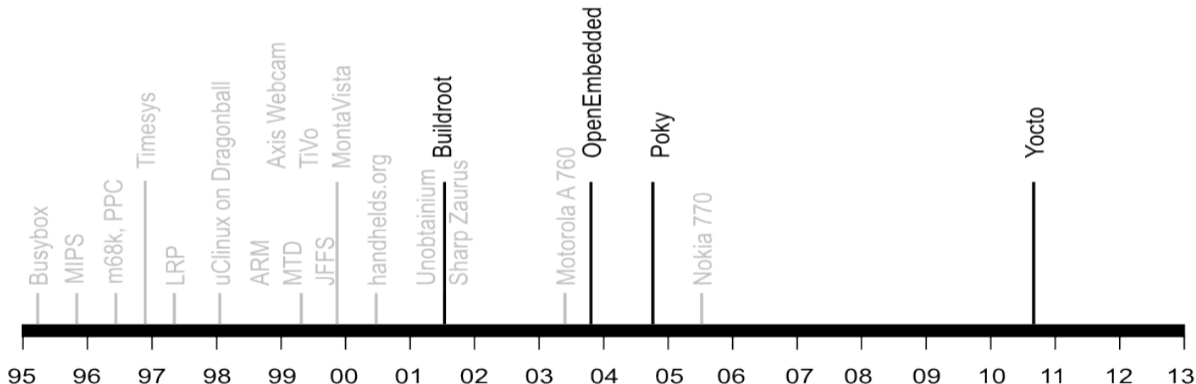
*Nokia 770 Internet Tablet running Maemo Linux*





# Embedded Linux gets easier: 2001 onwards

- Move away from RYO (Roll Your Own) embedded Linux distributions



# Embedded Linux build tools

*2001*

*Buildroot emerges from the uClinux/uClibc project*

*2003*

*OpenEmbedded Project is born, creating a common build system and code base for Familiar Linux, OpenZaurus and OpenSIMpad*

*2004*

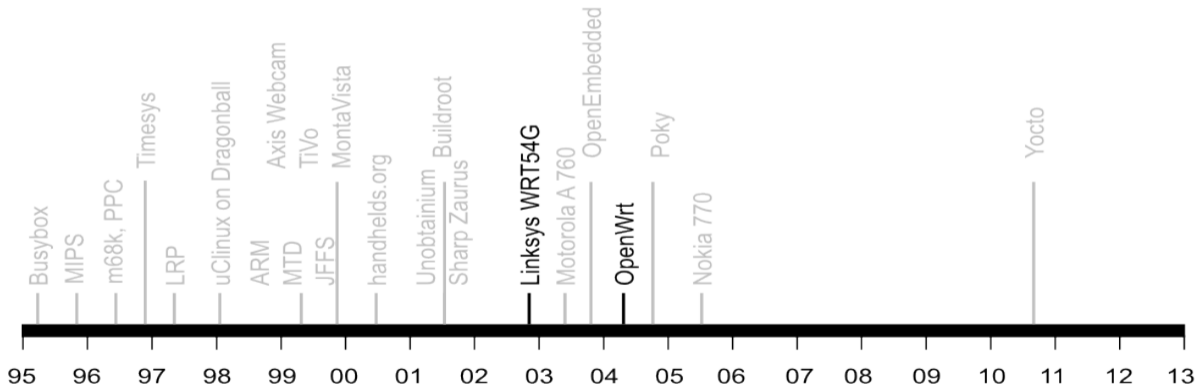
*OpenedHand employee Richard Purdie creates Poky Linux based on OpenEmbedded*

*2010*

*Intel spin off Poky Linux, acquired as part of OpenedHand, as the Yocto Project*

# Continuing the router story: 2002 onwards

- Linux becomes accepted in consumer WiFi routers



# The WRG54G and OpenWrt

*2002: December: Linksys release the WRT54G*

*2003: July Linksys post GPL source components of the WRT54G firmware*

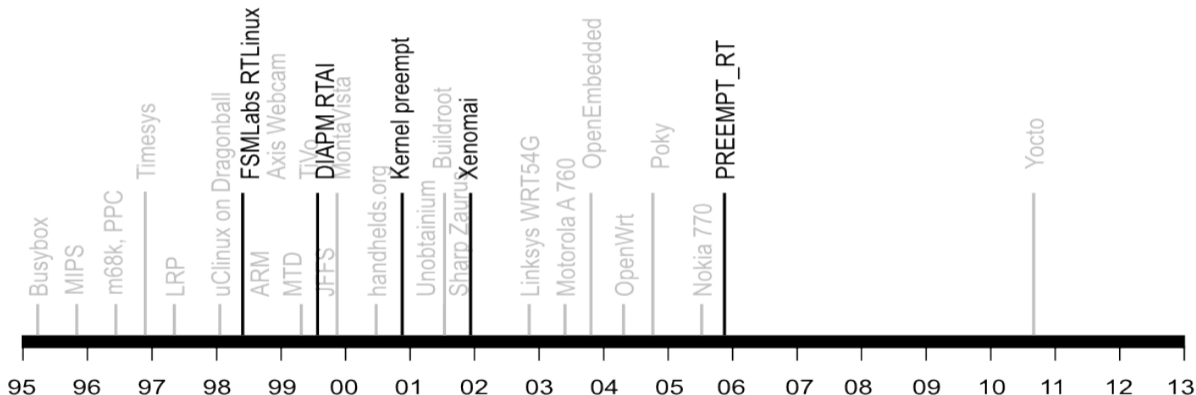
*2004: OpenWRT project starts*

*2004 onwards: a large proportion of WiFi routers run Linux*



# Real-time: 1998 to present day

- Sometimes, real-world events require a deterministic response
- Early versions of Linux were not very good at real-time



# Sub-kernels

*1998: FSMLabs RTLinux*

*1999: DIAPM RTAI*

*2001: Xenomai*

*2002: DIAPM Adeos/RTAI*

## *Patents*

*FSMLabs patented techniques used in both RTLinux and RTAI (associated with interrupt dispatching)*

*Adeos "nano kernel" implemented a different method, resolving the patent issue (probably)*

# Native real-time

*2000: Timesys launch Linux/RT 1.0*

*2000: voluntary preempt patch (Ingo Molnar and Andrew Morton)*

*2001: kernel preemption patch (Robert Love)*

*2003: Linux 2.6 includes voluntary preempt and kernel preemption patches*

*2005: PREEMPT\_RT kernel patch (Ingo Molnar, Thomas Gleixner and others)*

*2013: PREEMPT\_RT still not in mainline kernel*

# Where are we today?

*Android has 1.5 million activations per day, installed base 900 million*

*250 million set top boxes and smart TVs per annum*

*200 million WiFi routers per annum*

*Embedded Linux is the default OS*



- Any questions?