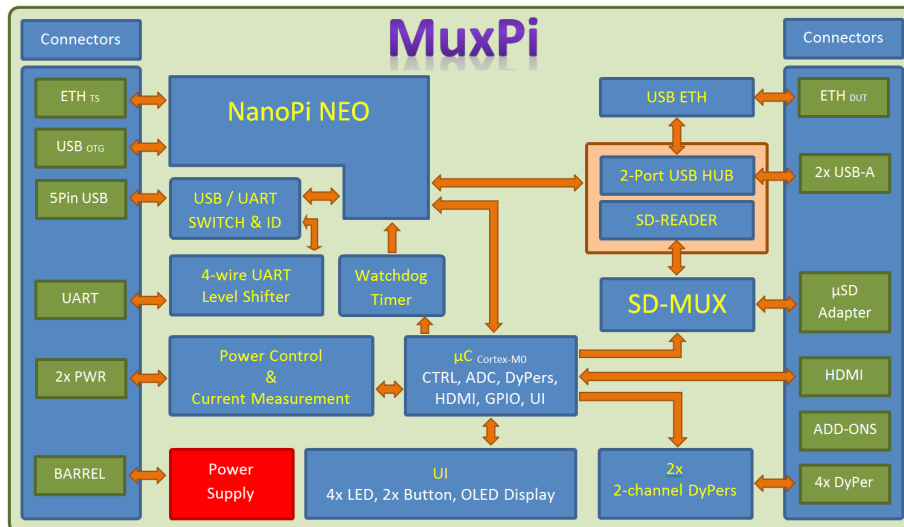




## MuxPi – remote access to embedded device made easy

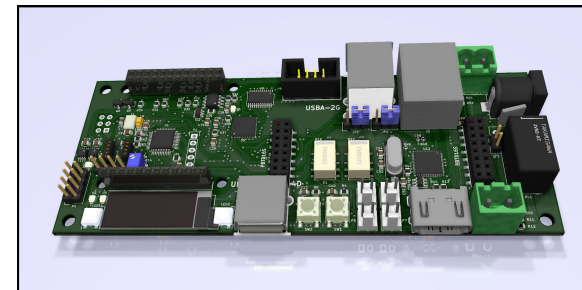
Paweł Wieczorek – Samsung R&D Institute Poland

### What is demonstrated



### What was improved

- Standalone device to aim development and testing on embedded devices
- Designed with extensibility in mind
- Self-aware (with state indication)
- Quick setup and easy maintenance



### Hardware Information

<https://wiki.tizen.org/MuxPi>

### Source code or detail technical information availability

<https://git.tizen.org/cgit/tools/muxpi>