

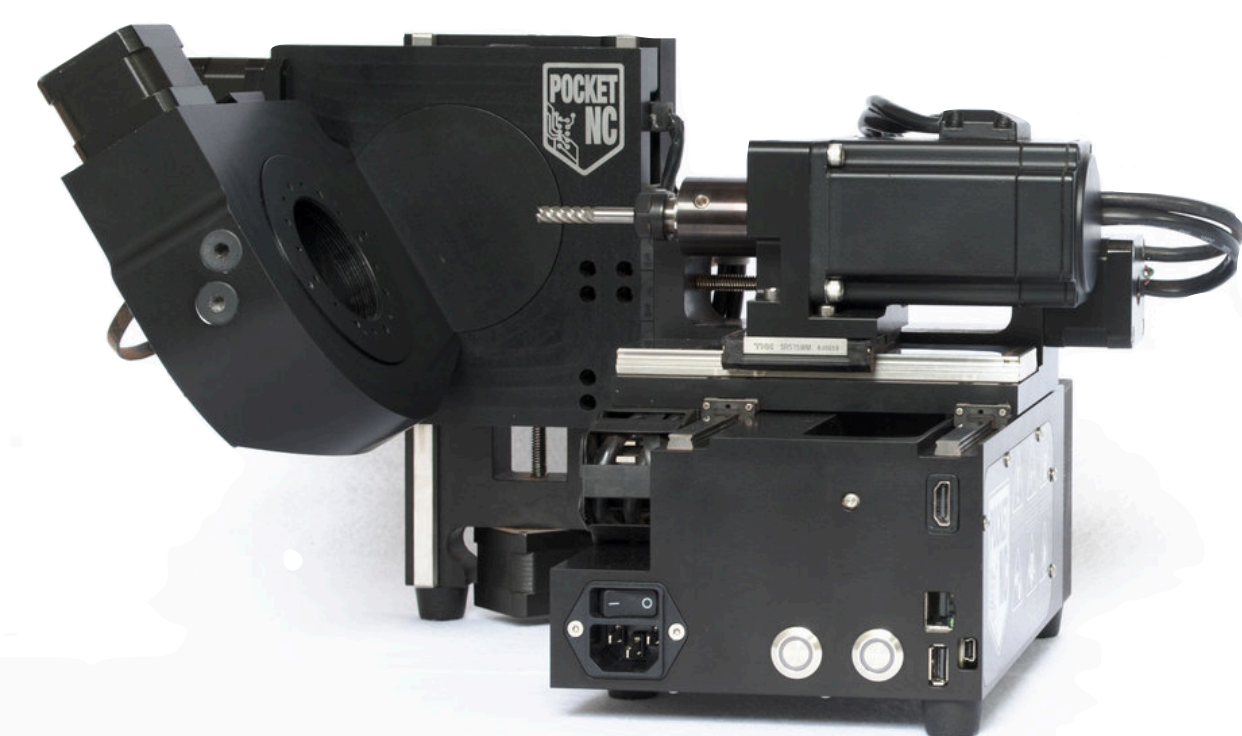


10 Years of BeagleBoard.org

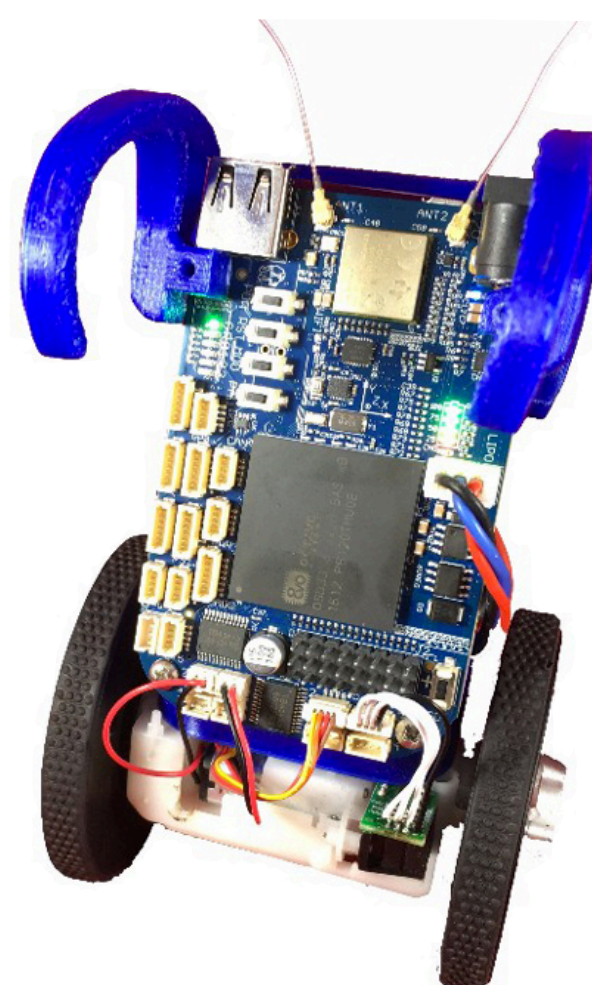
Jason Kridner



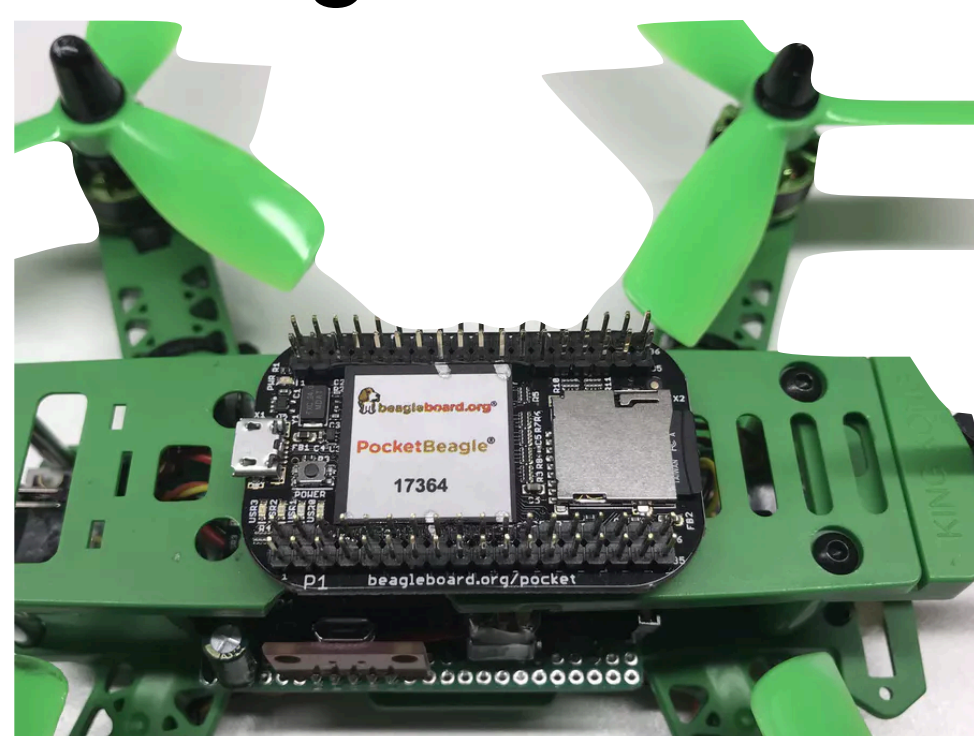
What is demonstrated



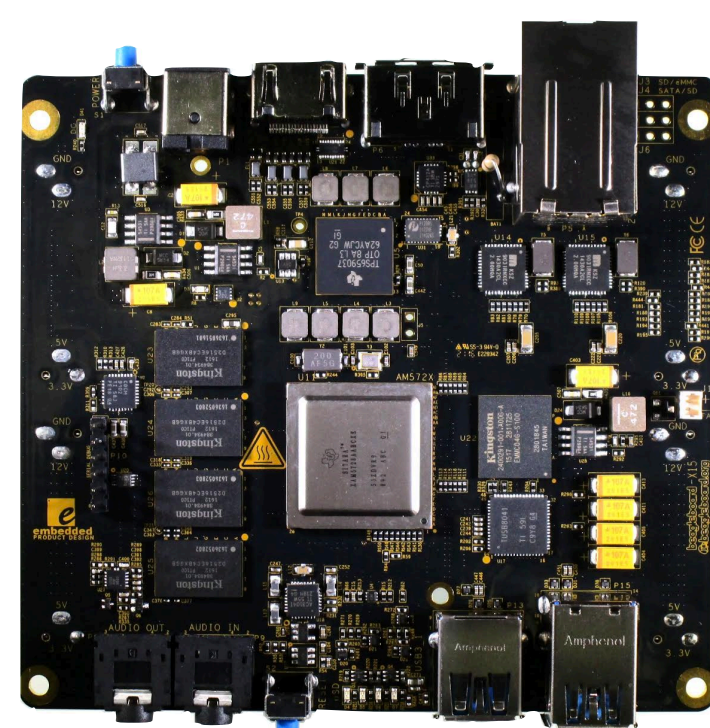
PocketNC
on BeagleBone® Black
running *Machinekit*



EduMIP
on BeagleBone® Blue
running *ROS*



PocketPilot
on PocketBeagle®
running *ArduPilot*



BeagleBoard®-X15
running *OpenCL*

Hardware Information

beagleboard.org/boards

What was improved

- Easier to customize with system-in-package (SIP) technology and KiCad references
- Greater interface and off-loading possibilities with PCIe, USB3, PRUs and Cortex-Mx MCUs
- Continued reduction in out-of-tree patches and growth in developer community
- More references closer to an end application and more training materials to get people started

Source code or detail technical information availability

github.com/beagleboard